

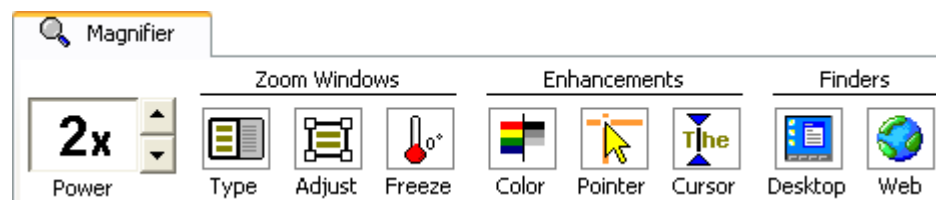
# Magnification Features

This chapter describes ZoomText's magnification features. These features are included in ZoomText *Magnifier* and ZoomText *Magnifier/ScreenReader*.

## The Magnifier Toolbar

---

The Magnifier toolbar provides quick access to ZoomText's magnification features. Each toolbar button has an intuitive icon and label for easy identification. Many of these buttons have pop-up menus that provide fast access to the most important and frequently used settings. Related buttons are grouped together and the group is labeled with a clickable link that opens their associated dialog box.



*The Magnifier toolbar*



**Power** Sets the magnification level from 1x to 16x.



**Type** Sets the zoom window type: Full, Overlay, Lens, Line or Docked. Each of these windows offers a unique way of viewing what's on the screen, accommodating different tasks and application environments.



Adjust

**Adjust** Sizes or moves a zoom window. To size a window, drag any handle. To move a window, drag inside the window frame. Right click to exit the tool. Note: The Full zoom window cannot be sized or moved.



Freeze

**Freeze** Freezes a portion of the full-zoom window. The Freeze window allows you to monitor one area of your application while simultaneously viewing and working in other areas.



Color

**Color** Selects color enhancement settings. Color enhancements improve screen clarity for easier viewing and reduced eyestrain. You can choose from preset color schemes or configure your own custom color settings.



Pointer

**Pointer** Selects mouse pointer enhancement settings. Pointer enhancements make it easy to locate and follow the mouse pointer. You can choose from a variety of preset pointer enhancement schemes or configure your own custom pointer enhancements.



Cursor

**Cursor** Select cursor enhancement settings. Cursor enhancements make it easier to locate and follow the text cursor. You can choose from a variety of preset cursor enhancement schemes or configure your own custom cursor enhancements.



Desktop

**Desktop** Activates the Desktop Finder. The Desktop Finder helps you find and launch programs on the desktop, system tray and quick launch bar. In addition, the Desktop Finder also helps you find and open items in the Control Panel, Programs menu and My Documents folder.



Web

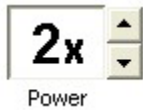
**Web** Activates the Web Finder. The Web Finder helps you find links and controls in any webpage.

## Setting the Magnification Level

---

ZoomText provides a wide range of magnification levels, allowing you to enlarge the view according to your needs. Magnification levels include: 1x to 8x in steps of 1, 10x to 16x in steps of 2, and fractional powers of 1.25x, 1.5x and 1.75x.

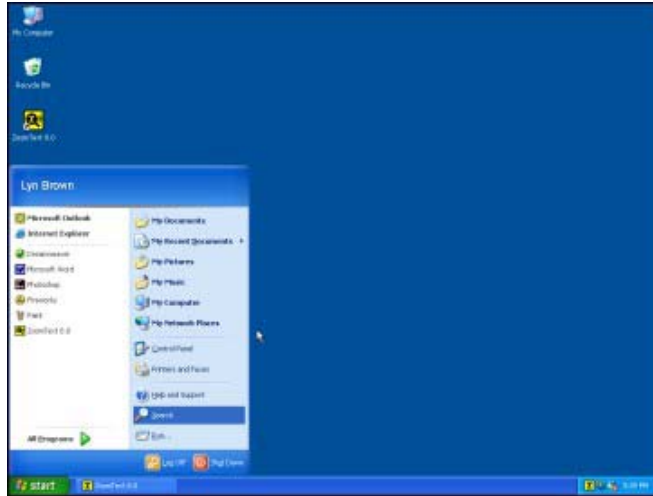
► **To adjust the magnification level**



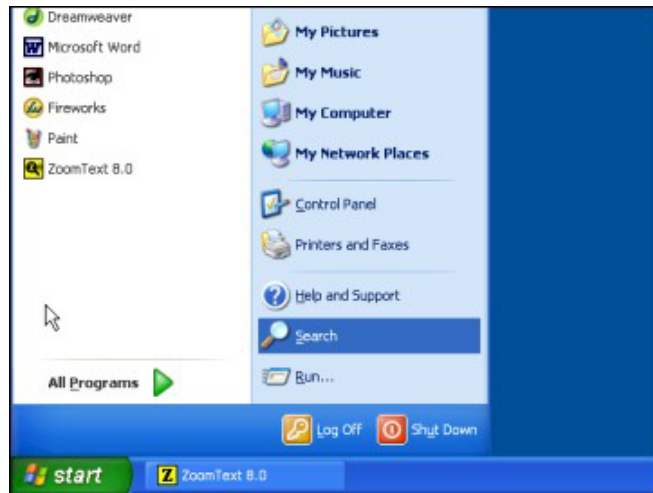
On the Magnifier toolbar, adjust the level in the **Power** spinbox.

Menu: **Magnifier ► Power ► 1x...16x**

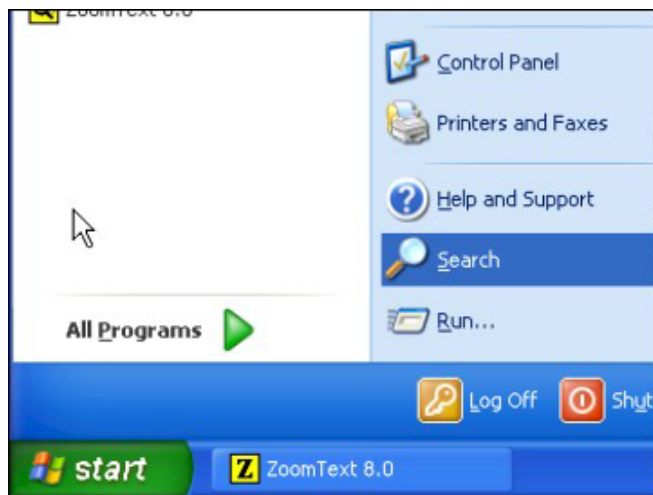
Hotkey: Increase Magnification: ALT + NUMPAD PLUS  
Decrease Magnification: ALT + NUMPAD MINUS



*1x View (normal screen)*



*2x View*



*3x View*




## Zoom Windows

---






A zoom window displays a magnified view of the computer screen. You can think of a zoom window as a magnifying glass held in front of the screen. A zoom window can only display a portion of the screen at any one time, but by scrolling its magnified contents, any area of the screen can be viewed.

### Window Types

ZoomText provides eight zoom window types: Full, Overlay, Lens, Line and four Docked positions. Each of these windows offers a unique way of viewing what is on the screen. At any time, you can switch zoom window types to accommodate a different task or application environment.

Zoom Window Types	
<p><b>Full</b> displays a magnified view that occupies the entire screen.</p>	 Full
<p><b>Overlay</b> displays a magnified view that can be sized and moved to occupy any portion of the screen.</p>	 Overlay
<p><b>Lens</b> moves over the normal screen like a magnifying glass, displaying what is directly beneath it. The lens automatically follows as you move the mouse pointer, type text and navigate through your programs.</p>	 Lens

(Continued)

<p><b>Line</b> moves up and down the screen like a magnifying ruler, displaying what is directly beneath it. The line window automatically follows as you move the mouse pointer, type text and navigate through your programs.</p>	 Line
<p><b>Docked</b> splits the screen in half, displaying a magnified 'docked' view on one side and a normal (unmagnified) view on the other. The magnified view can be docked against any edge of the screen: top, bottom, left, or right.</p>	 Top  Bottom  Left  Right

**Note:** Overlay, Lens, Line and Docked zoom windows can be sized and moved using the Adjust tool. For more information, see "Adjusting a Zoom Window" in this chapter.

## Selecting a Zoom Window

You can select a different zoom window at any time while ZoomText is active.

### ► To select a zoom window



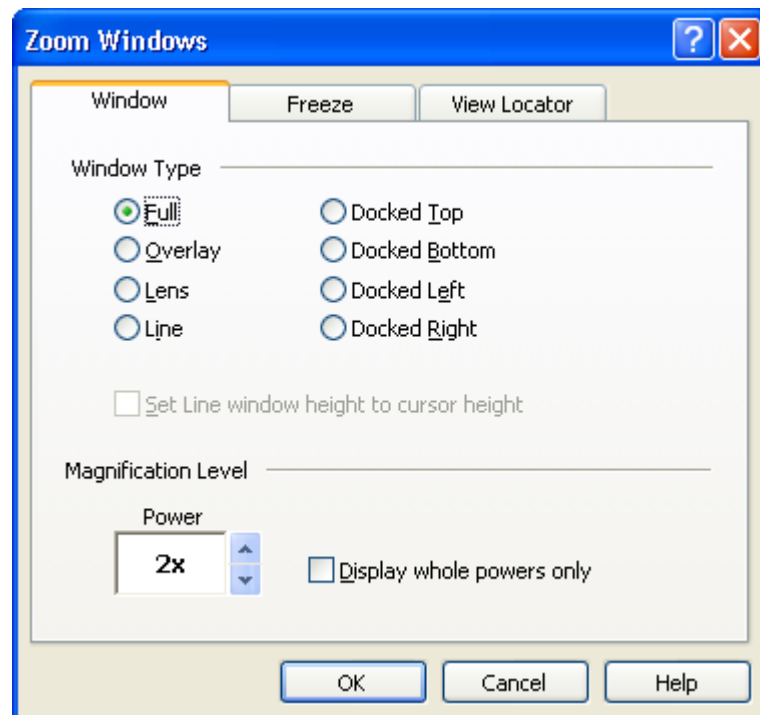
Type

On the Magnifier toolbar, select **Type**, and then select the desired zoom window.

Hotkey: CTRL + SHIFT + Z  
(cycles through the zoom windows types)

A zoom window type can also be selected in the Zoom Windows dialog.

1. In the Magnifier menu, choose **Zoom Window...**
2. Select the desired zoom window type.
3. Click the **OK** button.



*Window tab*

The following table describes the Window settings.

<b>Setting</b>	<b>Description</b>
<u>F</u> ull	Full displays a magnified view that occupies the entire screen.
<u>O</u> verlay	Overlay displays a magnified view that can be sized and moved to occupy any portion of the screen.
<u>L</u> ens	Lens moves over the normal screen like a magnifying glass, displaying what is directly beneath it. The lens automatically follows as you move the mouse pointer, type text and navigate through your programs.
<u>L</u> ine	Line moves up and down the screen like a magnifying ruler, displaying what is directly beneath it. The line window automatically follows as you move the mouse pointer, type text and navigate through your programs.
Docked <u>T</u> op	Displays a zoom window that occupies the top half of the screen. The height of the zoom window can be adjusted to occupy a larger or smaller portion of the screen.

*(Continued)*

Docked <u>B</u> ottom	Displays a zoom window that occupies the bottom half of the screen. The height of the zoom window can be adjusted to occupy a larger or smaller portion of the screen.
Docked <u>L</u> eft	Displays a zoom window that occupies the left side of the screen. The width of the zoom window can be adjusted to occupy a larger or smaller portion of the screen.
Docked <u>R</u> ight	Displays a zoom window that occupies the right half of the screen. The width of the zoom window can be adjusted to occupy a larger or smaller portion of the screen.
<u>S</u> et Line window height to cursor height	As the text cursor moves through larger or smaller text, the height of the Line window increases or decreases so that only the current line of text is displayed.
Power	Sets the magnification level. Magnification levels include: 1x to 8x in steps of 1, 10x to 16x in steps of 2, and fractional powers of 1.25x, 1.5x and 1.75x.
<u>D</u> isplay whole powers only	Excludes fractional magnification levels from the Power spinbox.

## Adjusting a Zoom Window

ZoomText's windows can be sized and/or moved to occupy a different portion of the screen (with the exception of Full zoom). The following table outlines the size/move characteristics for each zoom window type.

Window Type	Sizeable	Moveable
Full	no	no
Overlay	yes	yes
Lens	yes	automatic
Line	yes	automatic
Docked	yes	no
Freeze	yes	yes

### ► To size and move a zoom window



Adjust

1. On the Magnifier toolbar, select the **Adjust** tool.

*Sizing handles appear on the zoom window frame.*

Menu: **Actions ► Adjust Tool**

Hotkey: CTRL + SHIFT + A

2. To size the window, drag any handle.
3. To move the window, drag inside the window frame.
4. To scroll the contents of the window, hold down CTRL, and then drag inside the window frame.
5. To exit the Adjust tool, right-click or press ESC.

**Note:** The Adjust tool is grayed out when the Full zoom window is active.

## The Freeze Window

The Freeze window allows you to monitor information at one location while you simultaneously view and edit information at other locations. The Freeze window sits on top of the Full zoom window displaying your selected freeze location. The Full zoom window continues to scroll and display all areas of the screen.

### ► To set up a Freeze window



1. Set the zoom window type to **Full**.
2. On the Magnifier toolbar, select **Freeze ► New**.

*The Freeze tool becomes active.*

Menu: **Actions ► Freeze Tool**

3. Move the mouse pointer to scroll the desired freeze area into view.
4. Drag to select the freeze area.

*The Freeze window appears with sizing handles on the frame.*

5. To size the window, drag any handle. To move the window, drag inside the window frame. To scroll the contents of the window, hold down CTRL and drag inside the window frame.
6. To exit the Freeze tool, right click or press ESC.

**Note:** The Freeze window can be resized and/or moved using the Adjust tool.

► **To enable and disable the Freeze window**

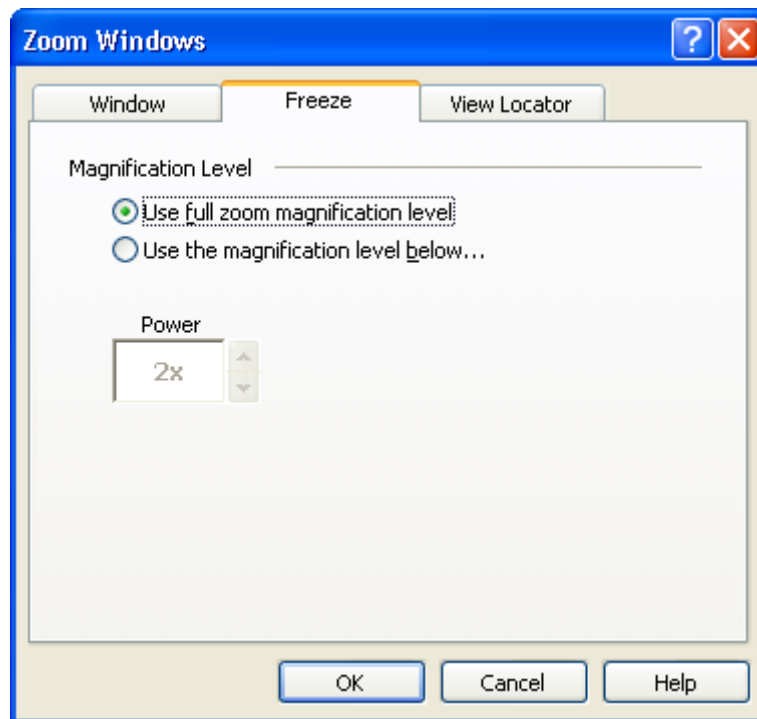


On the Magnifier toolbar, select **Freeze** ► **Enable** (or **Disable**).

Hotkey: CTRL + SHIFT + F

► **To adjust the Freeze window options**

1. In the Magnifier menu, choose **Freeze Window...**
2. Adjust the freeze window options as desired.
3. Click the **OK** button.



*Freeze tab*

The following table describes the Freeze window settings.

<b>Setting</b>	<b>Description</b>
Use <u>f</u> ull zoom magnification level	Sets the Freeze window to use the same magnification as the Full zoom window.
Use the magnification level <u>b</u> elow	Sets the Freeze window to use its own magnification level (set using the Power spinbox).
Power	Sets the Freeze window's magnification level. Magnification levels include: 1x to 8x in steps of 1, 10x to 16x in steps of 2, and fractional powers of 1.25x, 1.5x and 1.75x.

## Using View Mode and the View Locator

View mode shows you the area of the screen that is currently being magnified, and allows you to select a new area to zoom in on. When view mode is activated, magnification turns off and the view locator appears in the normal screen. By moving the view locator, you can select a new area to zoom in on.

### ► To use View Mode

1. In the Actions menu, choose **View Mode**.

*Magnification is temporarily turned off and the view locator appears.*

Hotkey: CTRL + SHIFT + V

2. Move the view locator to the desired screen location.
3. Click to zoom-in on the new location.

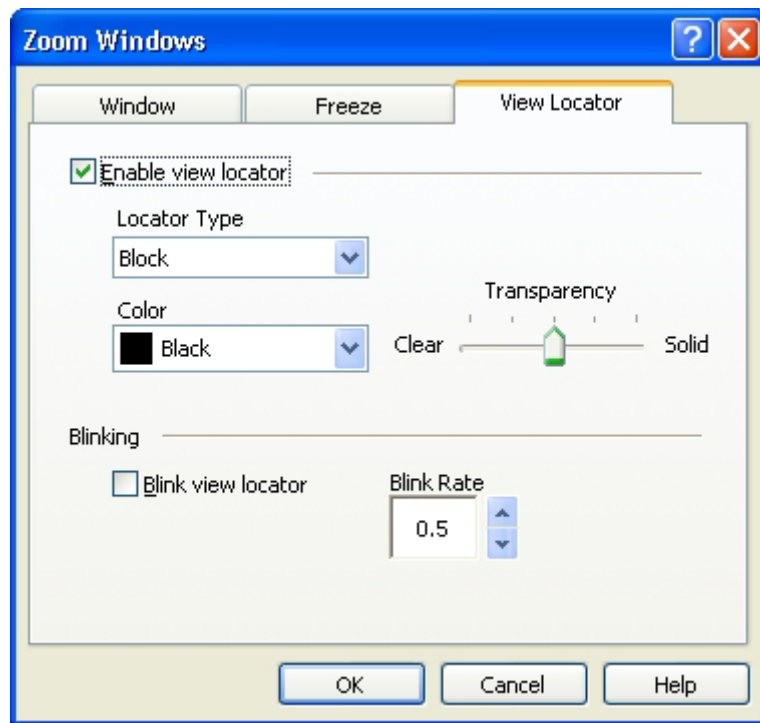
*Magnification is restored with the selected screen area.*

You can configure the view locator to appear in a variety of shapes and colors. The view locator can also be enabled to appear in normal (unmagnified) portions of the screen when using Overlay or Docked zoom windows.

► **To enable and configure the view locator**

1. In the Magnifier menu, choose View Locator...
2. Make sure the Enable view locator box is checked.
3. Adjust the locator options as desired.
4. Click the **OK** button.

**Note:** The view locator can be enabled and disabled using the Locator command: CTRL + SHIFT + L.



*View Locator tab*

The following table describes the View Locator settings.

<b>Setting</b>	<b>Description</b>
<u>E</u> nable view locator	Enables the display of the view locator.
Locator Type	Selects the type of view locator that's displayed.
Color	Selects the color that the view locator will appear in.
Transparency	Sets the level of transparency for the view locator. With transparency, the desktop image is visible through the view locator.
<u>B</u> link view locator	Turns locator blinking on or off.
Blink Rate	Sets the blink rate for the view locator in seconds (from .5 to 5 in increments of .5)

## Screen Enhancements

---

Screen enhancements improve the legibility of the screen. With these settings you can:

- Adjust screen colors for improved contrast and clarity.
- Modify the mouse pointer and text cursor, making them easier to see and follow.
- Apply text smoothing for clear and easy reading at all magnification levels.

### Color Enhancements

Color enhancements improve clarity of text and graphics, providing easier viewing and reduced eyestrain. The color enhancement options consist of a variety of filter effects that adjust color, contrast and brightness. You can choose from preset color schemes or configure your own custom color settings.

#### ► To choose a preset color scheme

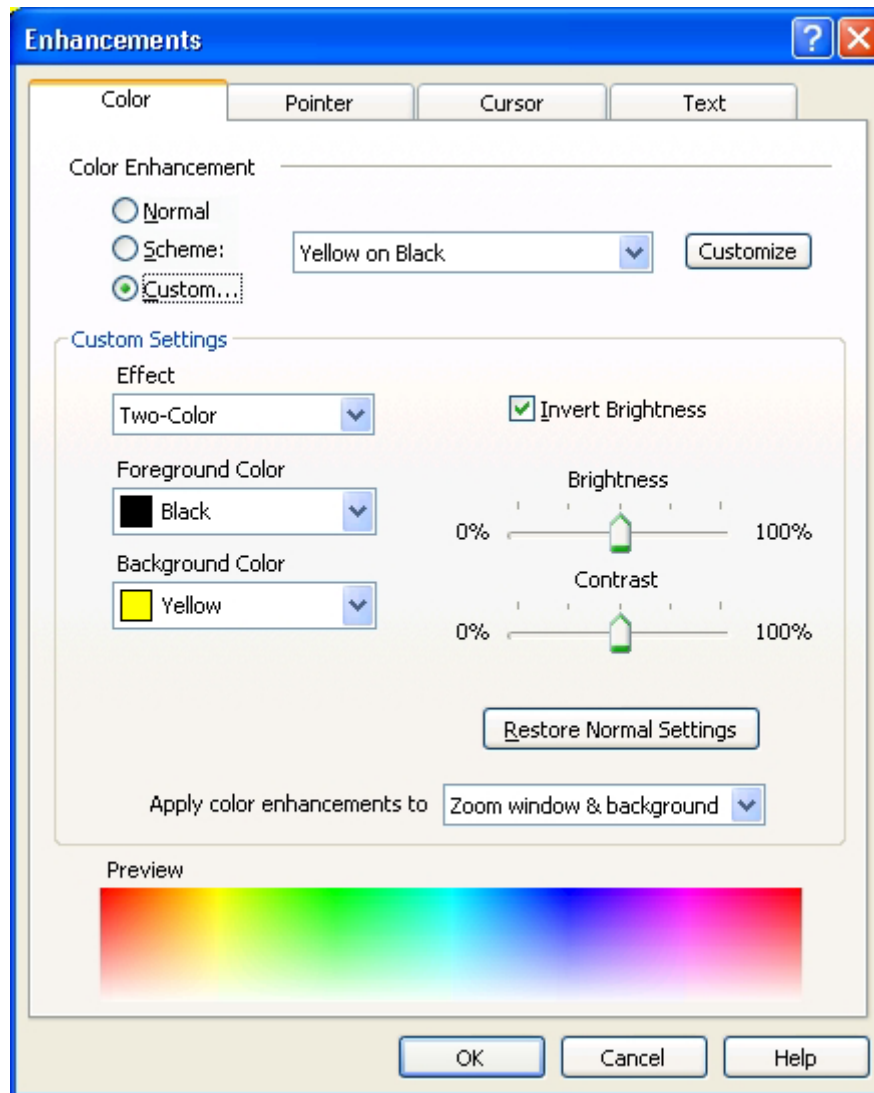


On the Magnifier toolbar, select **Color** ► **Scheme**, and then select the desired color scheme.

**Note:** You can turn color enhancements on and off using the Color Enhancements On/Off hotkey:  
CTRL + SHIFT + C.

► **To configure custom color settings**

1. In the Magnifier menu, choose Color Enhancements...
2. Select Custom...
3. Adjust the custom settings as desired.
4. Click the **OK** button.



*Color tab*

The following table describes the Color Enhancement settings.

Setting	Description
Normal	Disables all color enhancements.
Scheme:	Activates a preset color scheme (selected in the neighboring combo box).
Custom...	Activates the custom color settings.
Customize	Activates Custom Settings using the configuration from the current scheme.
Effect	<p>Selects the type of color effect and activates the associated settings.</p> <p><b>None</b> No filtering is applied.</p> <p><b>Black and White</b> Converts all colors to a their equivalent shades of gray.</p> <p><b>Reverse Video</b> Inverts all colors.</p> <p><b>Dyed</b> Transforms all screen colors to a single hue while preserving their light and dark values. Settings: Color</p> <p><b>Two-Color</b> Transforms all screen colors to a two-color spectrum. Settings: Foreground Color, Background Color</p> <p><b>Replace Color</b> Replaces a selected color with another. Settings: Replace (color), With (color), Bandwidth</p> <p><b>Remove Color</b> Removes a selected color from the spectrum. Settings: Color to Remove, Bandwidth</p>

(Continued)

<u>I</u> nvert Brightness	Inverts the brightness of all screen colors. Light colors become dark and vice-versa.
Color Level	Adjusts the amount of color saturation on the screen. At 0%, color is completely removed and the screen resembles black and white television. At 100%, colors are intensified. Note: This setting is only available when Effect is set to 'None'.
Bandwidth	Increases the range of color replacement or color removal to include all shades of the selected color. Note: This setting is only available when Effect is set to 'Replace Color' or 'Remove Color'.
Brightness	Increases or decreases the brightness of the screen image from 0% to 100%. Normal brightness is 50%.
Contrast	Increases or decreases the contrast of the screen image from 0% to 100%. Normal contrast is 50%.
<u>R</u> estore Normal Settings	Restores Brightness and Contrast to 50% (normal).

*(Continued)*

Apply color enhancements to	Determines whether color enhancements are applied to the zoom window, background (normal screen) or both.
Preview	Displays the color spectrum as it will appear with the selected color enhancements.

## Pointer Enhancements

Pointer enhancements make it easy to locate and follow the mouse pointer. You can adjust the size and color of the pointer, and activate a locator that emphasizes the pointer's position on the screen. You can choose from preset pointer schemes or configure your own custom pointer settings.

### ► To choose a preset pointer scheme

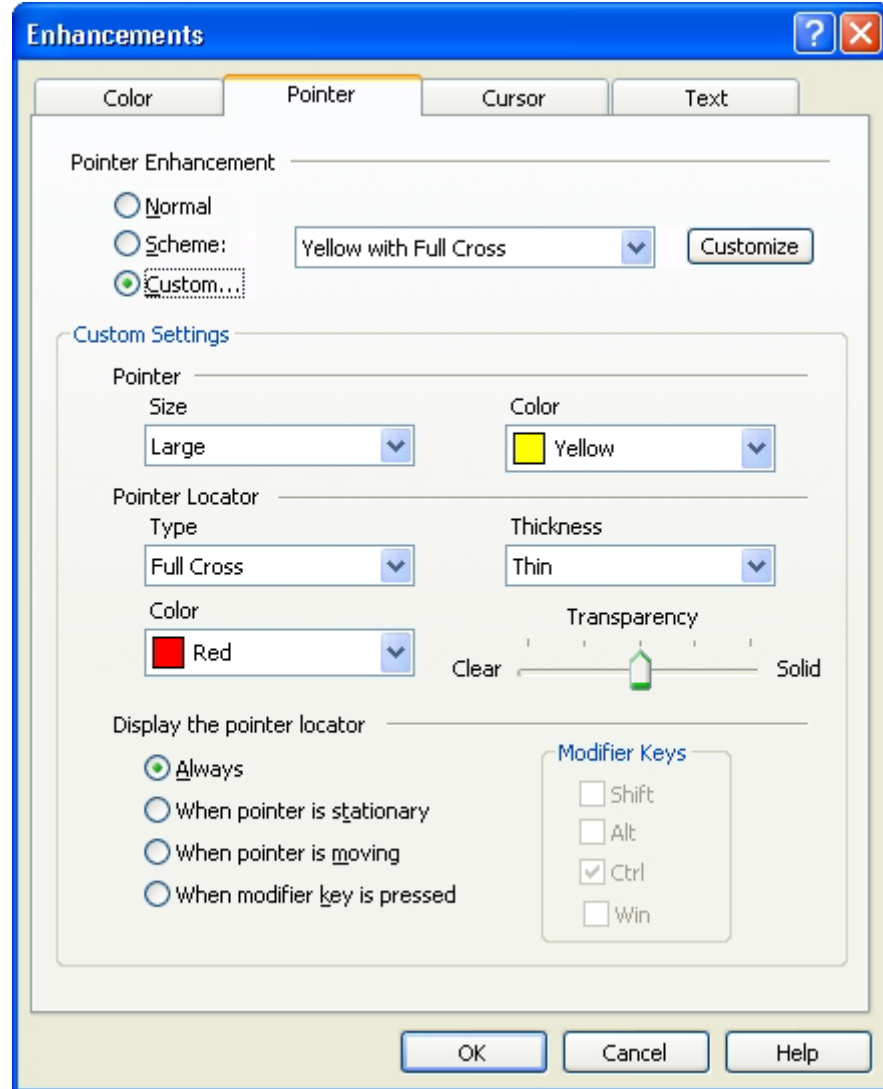


On the Magnifier toolbar, select **Pointer ► Scheme**, and then select the desired pointer scheme.

**Note:** You can turn pointer enhancements on and off using the Pointer Enhancements On/Off hotkey: CTRL + SHIFT + P.

### ► To configure custom pointer settings

1. In the Magnifier menu, choose Pointer **Enhancements...**
2. Select Custom...
3. Adjust the custom settings as desired.
4. Click the **OK** button.



*Pointer tab*

The following table describes the Pointer Enhancement settings.

Setting	Description
<u>N</u> ormal	Disables all pointer enhancements.
<u>S</u> cheme:	Enables a preset pointer scheme (selected in the neighboring combo box).
<u>C</u> ustom...	Activates the custom pointer settings.
Customize	Activates Custom Settings using the configuration from the current scheme.
Size	Sets the size of the enhanced mouse pointer to standard (1x), large (2x) or extra large (4x) sizes.
Color (pointer)	Sets the color for the mouse pointer.
Type	<p>Selects the type of pointer locator:</p> <p><b>Circle</b> Displays a circle that's centered over the pointer's hotspot.</p> <p><b>Sonar</b> Displays animated circles that radiate inward toward the pointer's hotspot.</p> <p><b>Full Cross</b> Displays a set of crosshairs that extend across the entire zoom window and intersect the pointer's hot spot.</p> <p><b>Crosshairs</b> Displays a set of crosshairs that are centered over the pointer's hot spot.</p>

(Continued)

Color (locator)	Sets the color for the pointer locator.
Thickness	Sets the thickness of the pointer locator: Thin, Medium or Thick.
Transparency	Sets the level of transparency for the pointer locator. With transparency, the screen image is visible through the selected pointer effect.
<u>A</u> lways	The pointer locator is always displayed.
When pointer is <u>s</u> tationary	The pointer locator is displayed when the pointer is not moving (stationary).
When pointer is <u>m</u> oving	The pointer locator is displayed when the pointer is moving.
When modifier <u>k</u> ey is pressed	The pointer locator is displayed when the modifier key is held down.
Modifier Keys	Selects a key or combination of keys that, when pressed, will display the pointer locator. Note: 'Display the pointer locator' must be set to 'When modifier key is pressed'.

## Cursor Enhancements

Cursor enhancements make it easy to locate and follow the text cursor. A choice of high visibility locators mark the cursor's position, without obscuring the surrounding text. You can choose from preset cursor schemes or configure your own custom cursor settings.

### ► To choose a preset cursor scheme

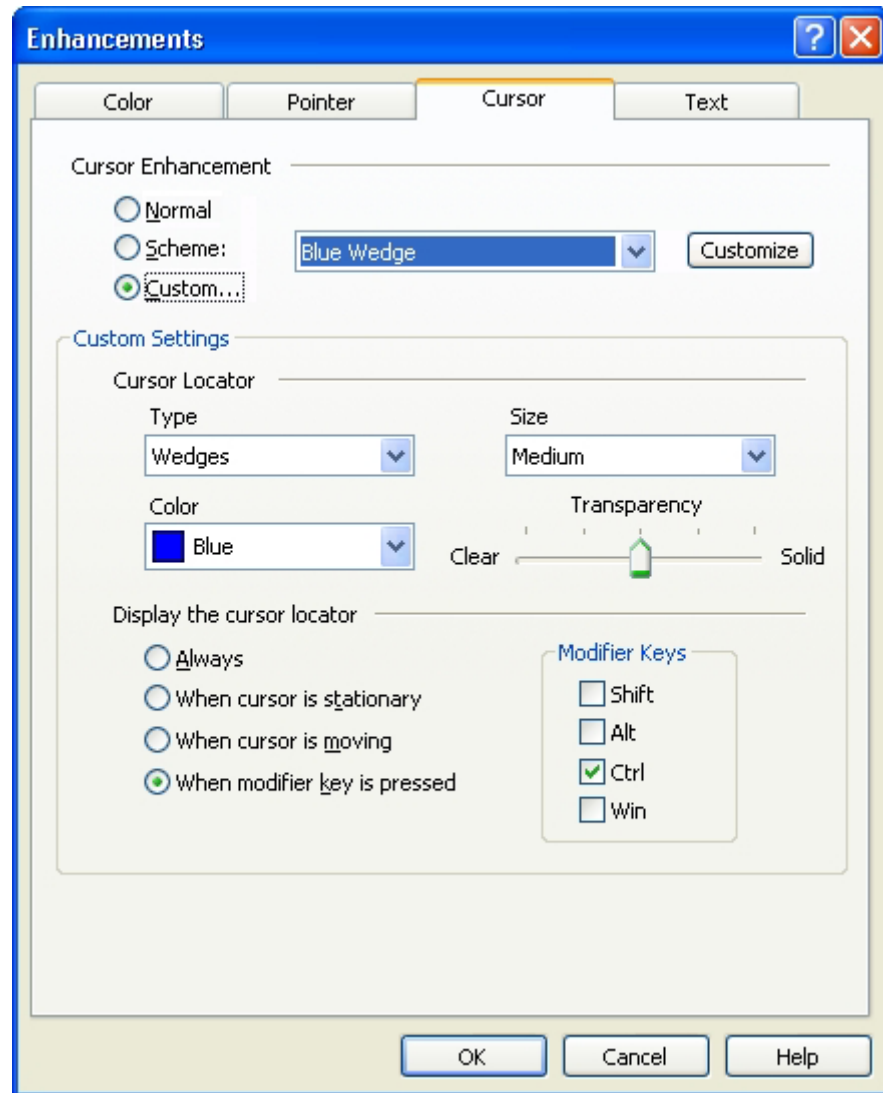


On the Magnifier toolbar, select **Cursor** ► **Scheme**, then select the desired cursor scheme.

**Note:** You can turn cursor enhancements on and off using the Cursor Enhancements On/Off hotkey: CTRL + SHIFT + R.

### ► To configure custom cursor settings

1. In the Magnifier menu, choose **C**ursor **E**nhancements...
2. Select **C**ustom...
3. Adjust the custom settings as desired.
4. Click the **OK** button.



*Cursor tab*

The following table describes the Cursor Enhancement settings.

<b>Setting</b>	<b>Description</b>
<u>N</u> ormal	Disables all cursor enhancements.
<u>S</u> cheme:	Activates a preset cursor scheme (selected in the neighboring combo box).
<u>C</u> ustom...	Activates the custom cursor settings.
Customize	Activates Custom Settings using the configuration from the current scheme.
Type	Selects the type of cursor locator: <b>Wedges</b> Displays triangular wedges above and below the cursor. <b>Circle</b> Displays a circle around the cursor. <b>Frame</b> Displays a rectangular frame around the cursor.
Size	Sets the size of the cursor locator: Thin, Medium or Thick.
Color	Sets the color for the cursor locator.
Transparency	Sets the level of transparency for the cursor locator. With transparency, the desktop image is visible through the selected cursor locator type.
<u>A</u> lways	The cursor locator is always displayed.

(Continued)

When cursor is <u>s</u> tationary	The cursor locator is displayed when the cursor is not moving (stationary).
When cursor is <u>m</u> oving	The cursor locator is displayed when the cursor is moving.
When modifier <u>k</u> ey is pressed	The cursor locator is displayed when the selected modifier keys are held down.
Modifier Keys	Selects a key or combination of keys that, when pressed, will display the cursor locator. Note: 'Display the cursor locator' must be set to 'When modifier key is pressed'.

## Text Enhancements

When screen images are magnified, the edges of text characters become jagged and difficult to read.

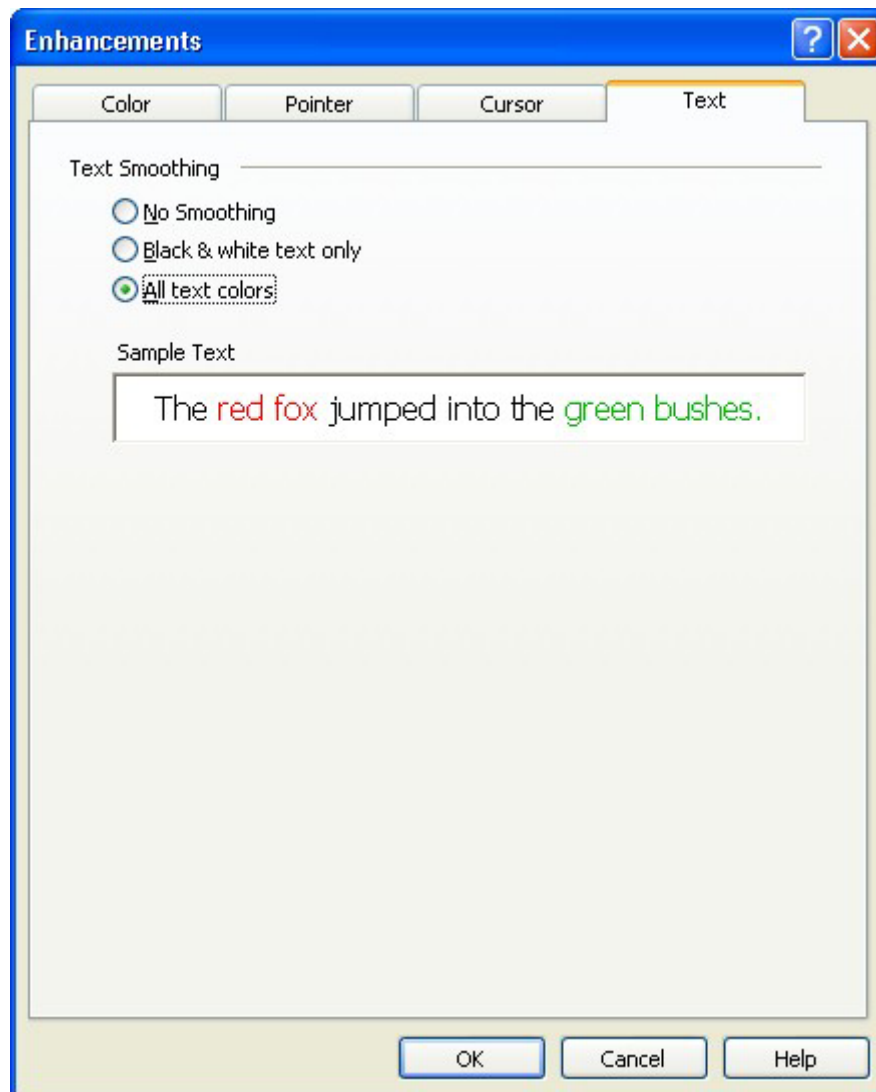
ZoomText's text smoothing feature eliminates the jagged edges, providing clear and easy-to-read text at all magnification levels.

ZoomText can smooth all colors of text, or black and white text only. By default, ZoomText smoothes all colors of text, so that color rich documents and web pages look their best. When faster video performance is required, text smoothing can be limited to black and white text only, or turned off altogether.

**Note:** You can change the text smoothing type using the Text Smoothing Type hotkey: CTRL + SHIFT + T.

► **To adjust the text enhancement options**

1. In the Magnifier menu, choose Text Enhancements...
2. Adjust the text enhancement options as desired.
3. Click the **OK** button.



*Text tab*

The following table describes the Text Enhancement settings.

<b>Setting</b>	<b>Description</b>
<u>N</u> o smoothing	Disables all text smoothing.
<u>B</u> lack & white text only	Enables smoothing of black and white text. Black pixels in icons, graphics and pictures are also smoothed.
<u>A</u> ll text colors	Enables smoothing of all colors of text. Black pixels in icons, graphics and pictures are also smoothed.
Sample Text	Displays a sample of multicolored text that is smoothed according to the selected text smoothing option.

## **Finders**

---

ZoomText's Desktop and Web finders provide fast access to applications and documents in the Windows desktop environment, and links and controls in web pages, HTML email and HTML Help systems. With intuitive filters and search tools, you can quickly find any item of interest.

### **Desktop Finder**

The Desktop Finder helps you find and open programs and documents located in the Windows desktop environment - including the quick launch bar, system tray and control panel. When executing the Desktop Finder, a dialog box displays a list of items located in the desktop environment. This list can be filtered and searched, allowing you to quickly locate the desired item. Desktop Finder 'Actions' allow you to open the item or view its properties.

## ► To use the Desktop Finder



1. On the Magnifier toolbar, select **Desktop**.

*The Desktop Finder dialog appears.*

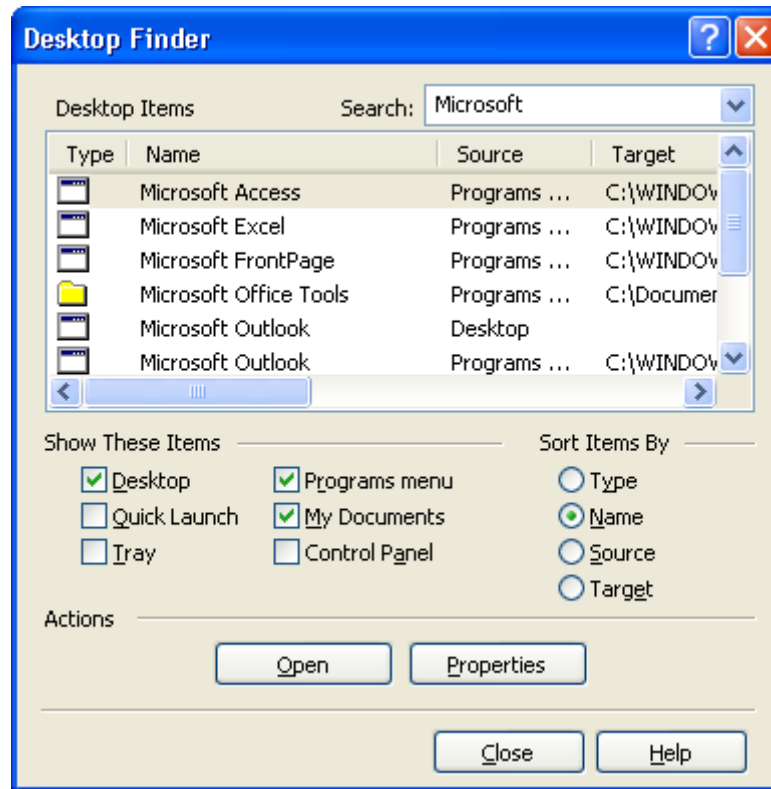
Menu: **Magnifier ► Desktop Finder...**  
 Hotkey: CTRL + SHIFT + D

2. Filter and sort the **Desktop Items** list by selecting the desired options under **Show These Items** and **Sort Items By**.
3. To narrow the search, type the information you are searching for in the **Search** combo box, or select a recent entry from the combo box list.

*As you type, the Desktop Items list is automatically filtered to display only items that contain the search string.*

4. Select the desired item in the Desktop Items list.
5. Click the **O**pen button to launch the selected item. Click the **P**roperties button to view the properties for the selected item.

*When selecting the Properties button the Desktop Finder remains open, allowing you to repeat this action on other desktop items. To bring the Desktop Finder dialog back into view, switch the focus back to ZoomText by pressing ALT + INSERT, or click the ZoomText button in the Windows task bar.*



*Desktop Finder dialog*

The following table describes the Desktop Finder settings.

Setting	Description
Desktop Items	Displays a list of desktop items - according to the selections under Show These Items and Sort Items By.
Search:	Provides a place for you to type the information you want to search for; or you can select a recent entry from the combo box list. As you type, the Desktop Items list is automatically filtered to display only items that contain the search string.

*(Continued)*

<u>D</u> esktop	Programs and shortcuts located on the Windows desktop are shown in the Desktop Items listbox.
<u>Q</u> uick Launch	Shortcuts located in the Quick Launch toolbar are shown in the Desktop Items listbox.
<u>T</u> ray	Utilities located in the system tray are shown in the Desktop Items listbox.
<u>P</u> rograms menu	Items in the Start > Programs menu are shown in the Desktop Items listbox.
<u>M</u> y Documents	Items in the My Documents folder are shown in the Desktop Items listbox.
<u>C</u> ontrol Panel	Applets in the Control Panel are shown in the Desktop Items listbox.
<u>T</u> ype	The Desktop Items are sorted by type (programs, folders, documents and links).
<u>N</u> ame	The Desktop Items are sorted by name.
<u>S</u> ource	The Desktop Items are sorted by source.
<u>T</u> arget	The Desktop Items are sorted by target string (i.e. directory path or URL).
<u>O</u> pen	Opens the selected item.
<u>P</u> roperties	Displays the Properties dialog for the selected item.

## **Web Finder**

The Web Finder helps you find links and controls in Internet Explorer, HTML email, and HTML Help systems. When executing the Web Finder, a dialog box displays a list of links and controls in the last active HTML document. This list can be filtered and searched, allowing you to quickly find the desired item. Web Finder 'Actions' allow you to execute a selected link, scroll to a link or control, or begin reading (with AppReader) at the location of a link or control.

## ► To use the Web Finder



1. On the Magnifier toolbar, select **Web**.

*The Web Finder dialog appears.*

Menu:	<b>Magnifier ► Web Finder...</b>
Hotkey:	CTRL + SHIFT + W

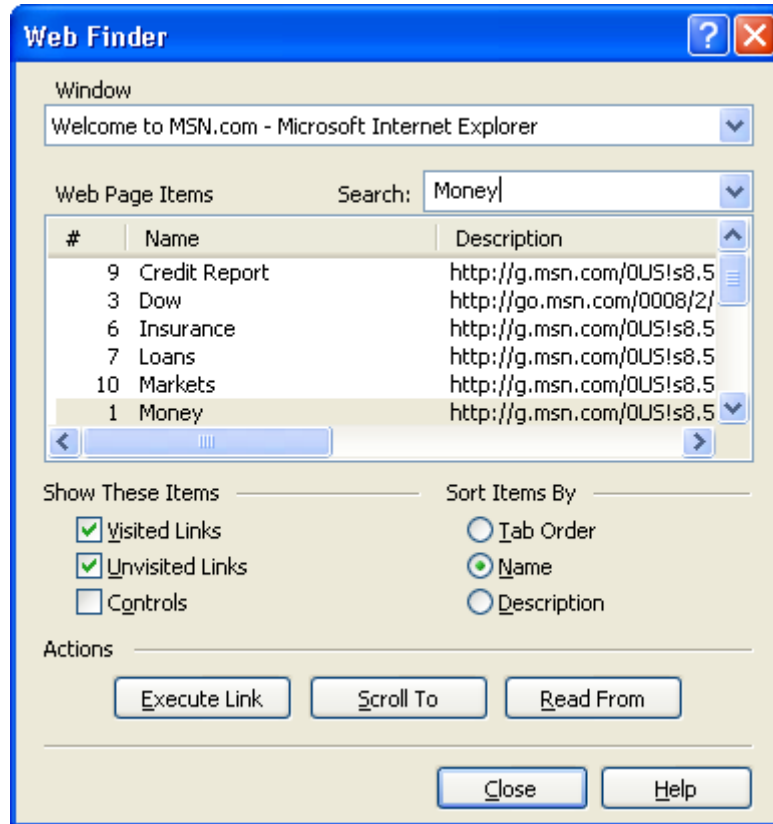
2. Filter and sort the **Web Page Items** list by selecting the desired options under **Show These Items** and **Sort Items By**.
3. To narrow the search, type the information you are searching for in the **Search** combo box, or select a recent entry from the combo box list.

*As you type, the Web Page Items list is automatically filtered to display only items that contain the search string.*

4. Select the desired item in the Web Page Items list.
5. Click the **Execute Link** button to execute the selected link. Click the **Scroll To** button to scroll the selected item into view. Click the **Read From** button to begin reading (with AppReader) at the location of the selected item.

*When selecting the Scroll To or Read From buttons, the Web Finder dialog remains open, allowing you to repeat these actions on other webpage items. To bring the Web Finder dialog back into view, switch the focus back to ZoomText by pressing ALT + INSERT, or click the ZoomText button in the Windows task bar.*

**Note:** The **Read From** option is not available in ZoomText Magnifier.



*Web Finder dialog*

The following table describes the Web Finder settings.

Setting	Description
Window	Displays a list of all web pages (opened in Internet Explorer), HTML emails (opened in Outlook) and HTML Help windows that are currently open. Info for the selected instance is displayed in the Web Page Items listbox.
Web Page Items	Displays a list of links and controls from the web page specified in the Window combo box.

*(Continued)*

<b>Search:</b>	Provides a place for you to type the information you want to search for; or you can select a recent entry from the combo box list. As you type, the Web Page Items list is automatically filtered to display only items that contain the search string.
<b><u>V</u>isited Links</b>	Links that have been visited are shown in the Web Page Items listbox.
<b><u>U</u>nvisited Links</b>	Links that have not been visited are shown in the Web Page Items listbox.
<b><u>C</u>ontrols</b>	Controls (edit boxes, buttons, etc.) are shown in the Web Page Items listbox.
<b><u>T</u>ab Order</b>	Web Page Items are sorted by the tab order of the links and controls.
<b><u>N</u>ame</b>	Web Page Items are sorted by name.
<b><u>D</u>escription</b>	Web Page Items are sorted by description (URL and/or control type).
<b><u>E</u>xecute Link</b>	Executes the selected link. Note: Execute Link is disabled (grayed out) when a control item is selected.
<b><u>S</u>croll To</b>	Scrolls the selected link or control into view and sets the focus to the object.
<b><u>R</u>ead From</b>	Launches AppReader and begins reading from the location of the selected item. Note: The Read From option is not available in ZoomText Magnifier.

## Navigation Settings

---

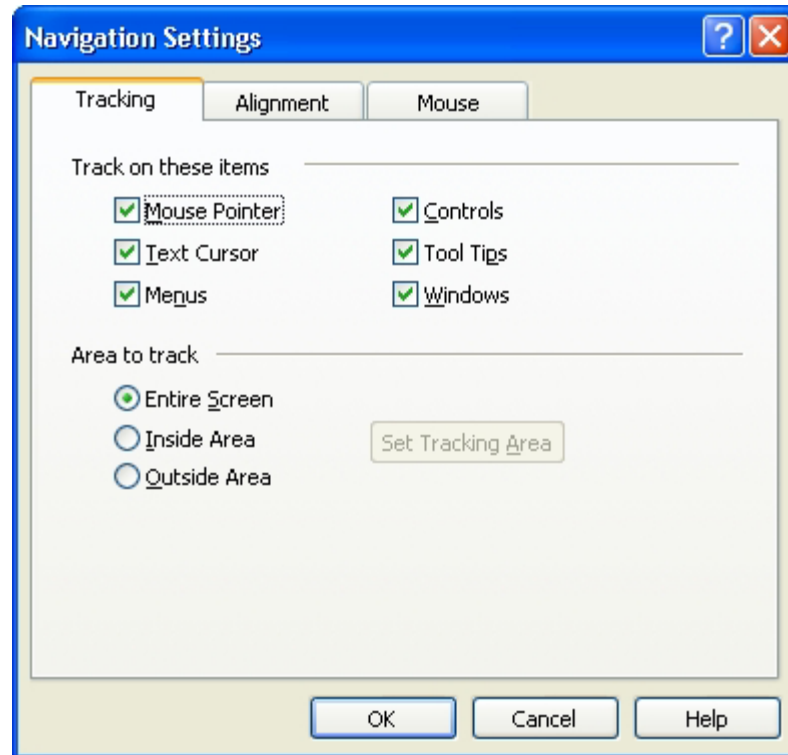
Navigation settings control how ZoomText keeps tracked activity in view. With these settings you can:

- Select the types of activity that will be tracked.
- Define how tracked items are aligned in the zoom window.
- Route and constrain mouse pointer for smoother navigation.

## Tracking

As you move the mouse, type text, and navigate menus, dialogs and other program controls, the zoom window automatically scrolls to keep the focus in view. This behavior is driven by ZoomText's tracking options, which allow you to choose the items that you want ZoomText to track (when they become active). You can also limit tracking to a selected area of the screen.

- ▶ **To adjust the tracking options**
  1. In the Settings menu, choose Tracking...
  2. Adjust the tracking options as desired.
  3. Click the **OK** button.



*Tracking tab*

The following table describes the Tracking settings.

Setting	Description
<u>M</u> ouse pointer	Track on the mouse pointer when it moves.
<u>T</u> ext cursor	Track on the text cursor when it moves.
Men <u>u</u> s	Track on highlighted menu items.
<u>C</u> ontrols	Track on controls when they receive focus. Controls include buttons, check boxes, radio buttons, list boxes, etc.
Tool <u>T</u> ips	Track on tool tips when they appear.

*(Continued)*

<u>W</u> indows	Track on windows when they are activated.
Entire <u>S</u> creen	Allows activity anywhere on the screen to be tracked.
<u>I</u> nside Area	Limits tracking to activity inside the defined tracking area. The tracking area can be set by clicking the Set Tracking Area button.
<u>O</u> utside Area	Limits tracking to activity outside the defined tracking area. The tracking area can be set by clicking the Set Tracking Area button.
Set Tracking <u>A</u> rea	Activates a tool for setting the Inside and Outside tracking areas (whichever is currently selected). When the tool is activated a tracking area frame with sizing handles appears on the screen. To size the frame, drag any handle. To move the frame, drag inside the frame. Right-click to exit the tool.

## Turning tracking on and off

At times you may want to disable tracking – to keep a specific view in the zoom window.

▶ **To turn tracking on and off**

Press the Tracking On/Off hotkey:

CTRL + ALT + SHIFT + T.

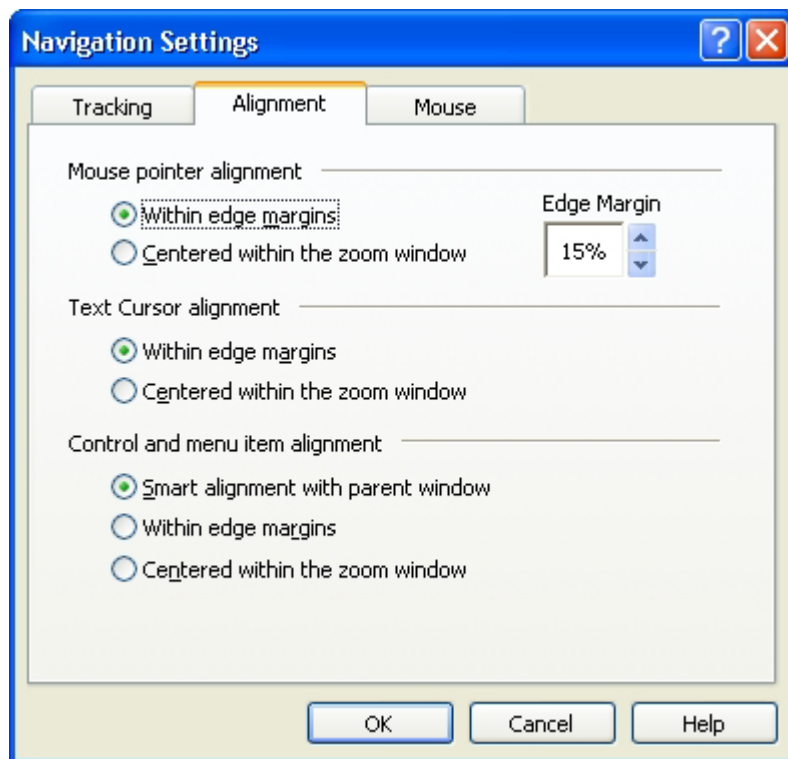
**Note:** ZoomText configurations are always saved with Tracking in the on state.

## Alignment

Alignment options control how the zoom window scrolls to keep tracked items in view. There are two general types of alignment; edge and center. With edge alignment, the zoom window only scrolls as needed to keep the tracked object in view. With center alignment, the zoom window scrolls as needed to keep the tracked object in the center of the zoom window. A third alignment type, "smart alignment", scrolls a control and its parent window (or context) into view.

► **To adjust the alignment options**

1. In the Settings menu, choose Alignment...
2. Adjust the alignment options as desired.
3. Click the **OK** button.



*Alignment tab*

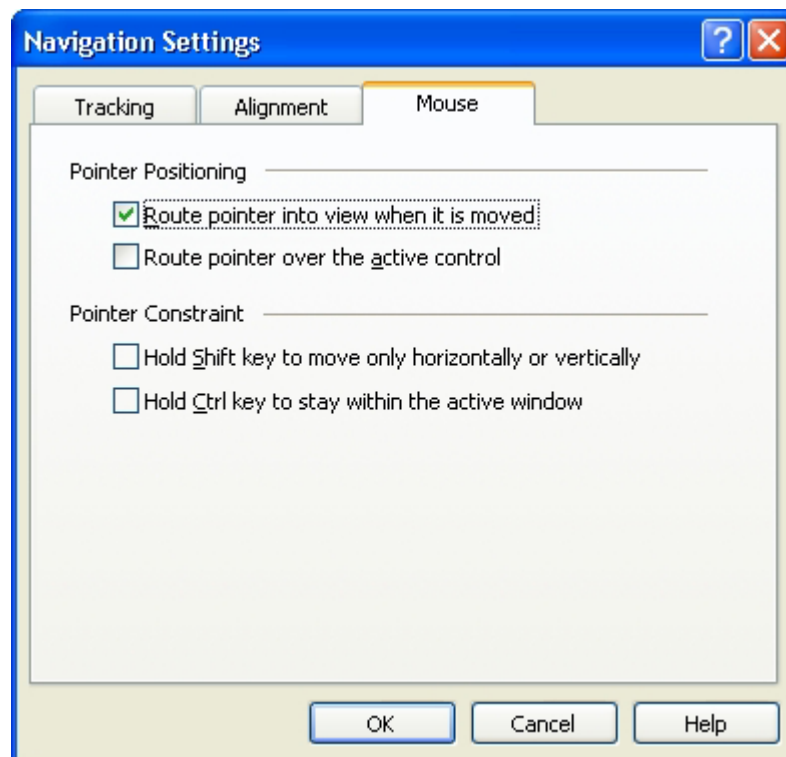
The following table describes the Alignment settings.

<b>Setting</b>	<b>Description</b>
Within edge margins	The zoom window only scrolls only as needed to keep the tracked object within the edge margins.
Centered within the zoom window	The zoom window scrolls to keep the tracked object centered in the magnified view.
Edge margin	Defines how close to the edge of the zoom window a tracked object can move before the window begins to scroll. The edge margin can be set from 0% (no margin) to 50% (half the width and height of the zoom window).
<u>S</u> mart alignment with parent window	The zoom window scrolls a tracked control and it's parent window (or context) into view. This setting streamlines scrolling when navigating menus and dialogs.

## Mouse

The Mouse navigation options make it easy to explore and move about the screen. With pointer positioning, the mouse pointer is always brought into view when you need it. With pointer constraints, you can limit mouse pointer movement to horizontal or vertical directions, or within the active window.

- ▶ **To adjust the mouse navigation options**
  1. In the Settings menu, choose Mouse...
  2. Adjust the mouse navigation options as desired.
  3. Click the **OK** button.



*Mouse tab*

The following table describes the Mouse settings.

Setting	Description
<u>R</u> oute pointer into view when it is moved	Automatically moves the pointer to the center of the magnified view – whenever the pointer moves while located outside the view.
Route pointer to the <u>a</u> ctive control	Automatically moves the pointer to menu items and dialog controls when they receive focus.
Hold <u>S</u> hift key to move horizontally or vertically	While holding down the SHIFT key, the mouse pointer moves horizontally or vertically only, depending on the initial direction of mouse movement. This constrained movement provides smoother scrolling through rows and columns of information.
Hold <u>C</u> trl key to stay within the active window	While holding down the CTRL key, mouse pointer movement is constrained to the active window, keeping you from scrolling away from your area of interest.

## Smooth Scrolling

Scroll hotkeys allow you to smoothly scroll to any area of the screen, or jump instantly to a specific screen location.

► **To smoothly scroll the zoom window**

1. Hold down ALT and press the arrow key that corresponds to the desired direction.

To...	Press...
Scroll left	ALT + LEFT
Scroll right	ALT + RIGHT
Scroll up	ALT + UP
Scroll down	ALT + DOWN

2. To increase the scrolling speed, press the same arrow key (each press will increase the speed).
3. To decrease the scrolling speed, press the opposite arrow key (each press will decrease the speed until scrolling stops).
4. To scroll in a different direction, press the arrow key corresponding to the new direction.
5. To stop scrolling, release the key ALT key.

▶ **To jump to an edge or the center of the screen**

Use the following hotkeys:

To...	Press...
Jump to left edge	ALT + HOME
Jump to right edge	ALT + END
Jump to top edge	ALT + PAGE UP
Jump to bottom edge	ALT + PAGE DOWN
Jump to center	ALT + NUMPAD 5

▶ **To save and restore a specific view of the screen**

The current view can be saved and restored (at a later time) using the following hotkeys:

To...	Press...
Save the current view	ALT + NUMPAD /
Restore the saved view	ALT + NUMPAD *

