

CHAPTER 5

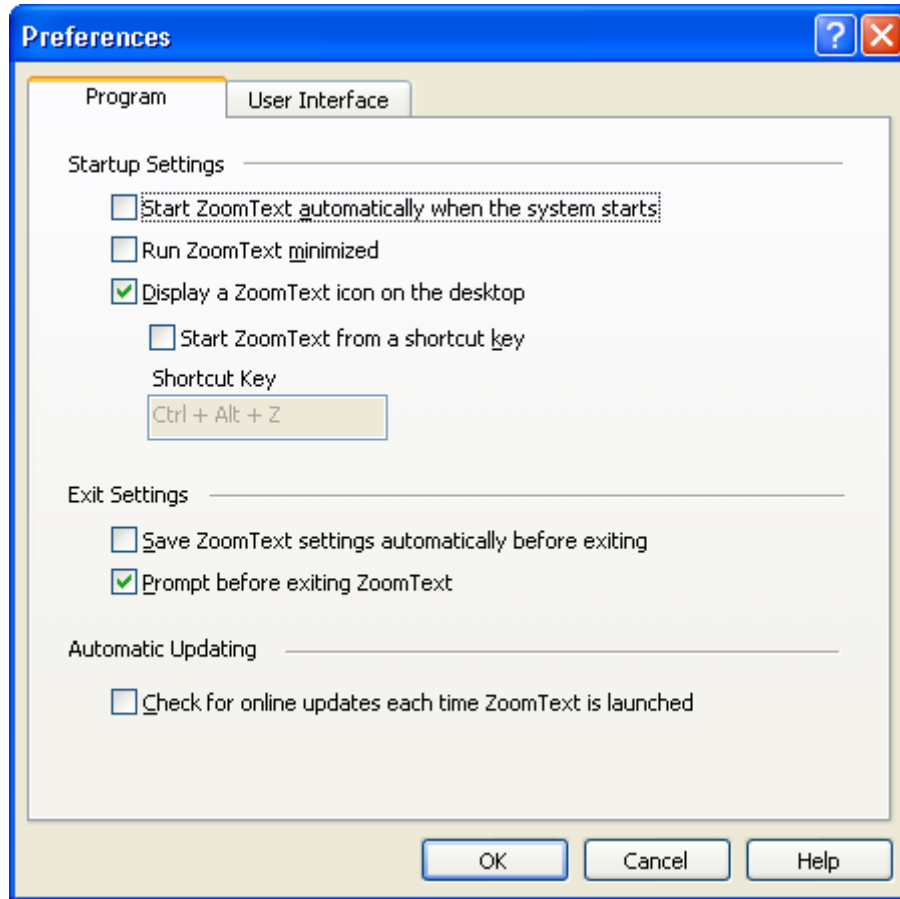
Preferences

Preferences are convenience features that control how ZoomText starts, exits and appears on the Windows desktop while running. You can also enable Automatic Updating, so that ZoomText automatically checks for available online updates each time you launch the program.

Program Preferences

Program preferences control how ZoomText starts and exits, and allows you to enable automatic updating.

- ▶ **To adjust the program preferences**
 1. In the Settings menu, choose Program...
 2. Adjust the program preference options as desired.
 3. Select the **OK** button.



Program tab

The following table describes the Program preference settings.

Setting	Description
<u>S</u> tart ZoomText automatically when the system starts	ZoomText will automatically run each time you start your system.
Run ZoomText <u>m</u> inimized	The ZoomText user interface is minimized when ZoomText is a started.

(Continued)

<p><u>D</u>isplay a ZoomText icon on the desktop</p>	<p>Displays the ZoomText desktop icon.</p>
<p>Start ZoomText from a shortcut <u>k</u>ey</p>	<p>Enables ZoomText to be started by pressing a shortcut key.</p>
<p>Shortcut key</p>	<p>Provides a space for you to define (type) the keyboard shortcut for starting or switching to ZoomText. Shortcut keys consist of two modifier keys (any combination of CTRL, ALT, and SHIFT), and a primary key (any letter, number or symbol). For example, to define the ZoomText shortcut key as CTRL + SHIFT + Z, select the Shortcut key field, and then press CTRL, SHIFT and Z simultaneously.</p> <p>Note: No other program can use this key combination. If the shortcut key conflicts with an access key in a Windows-based program, the access key will not work. An access key is a letter or number that carries out a command when used in combination with the ALT key.</p>

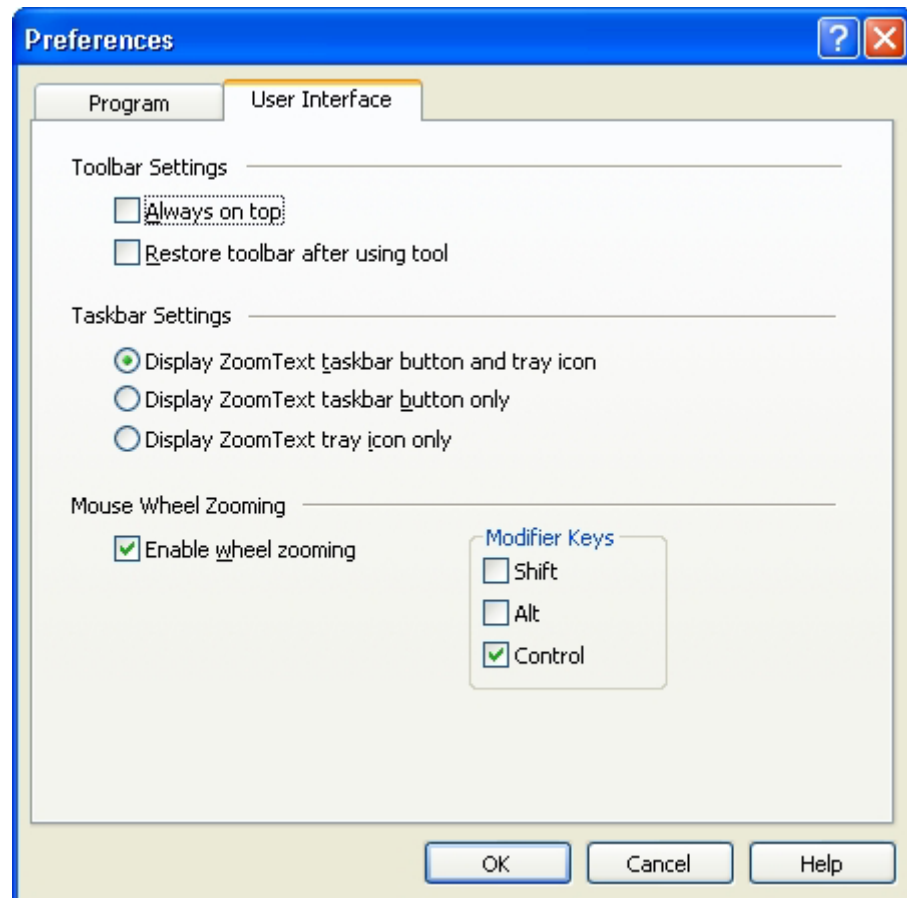
(Continued)

<u>S</u> ave ZoomText settings automatically before exiting	All ZoomText settings are saved to the active configuration when the program exits.
<u>P</u> rompt before exiting ZoomText	You are prompted to confirm your choice to exit the program.
<u>C</u> heck for online updates each time ZoomText is launched	Each you start ZoomText, if an Internet connection is established, ZoomText will check the Ai Squared website for available program updates. If updates are available, the update wizard will automatically download and install the updates.

User Interface Preferences

User interface preferences control how the ZoomText user interface appears on the Windows desktop.

- ▶ **To adjust the user interface preferences**
 1. In the Settings menu, choose User Interface...
 2. Adjust the user interface options as desired.
 3. Select the **OK** button.



User Interface tab

The following table describes the User Interface settings.

Setting	Description
<u>A</u> lways on top	The ZoomText user interface window will remain on top of all other windows, even when ZoomText is not the active application.
Restore toolbar after using tool	The ZoomText toolbar is always restored when exiting a ZoomText tool.
Display ZoomText <u>t</u> askbar button and tray icon	When ZoomText is running, its taskbar button and tray icon are both displayed.
Display ZoomText taskbar <u>b</u> utton only	When ZoomText is running, only its taskbar button is displayed.
Display ZoomText tray <u>i</u> con only	When ZoomText is running, only its system tray icon is displayed.
Enable <u>w</u> heel zooming	Enables use of the mouse wheel to change the magnification level.
Modifier Keys	Selects the key combination to be used for mouse wheel zooming. These keys must be held down while rotating the mouse wheel in order to change the magnification level.